

**P-X401**  
**FILTER PUMP**

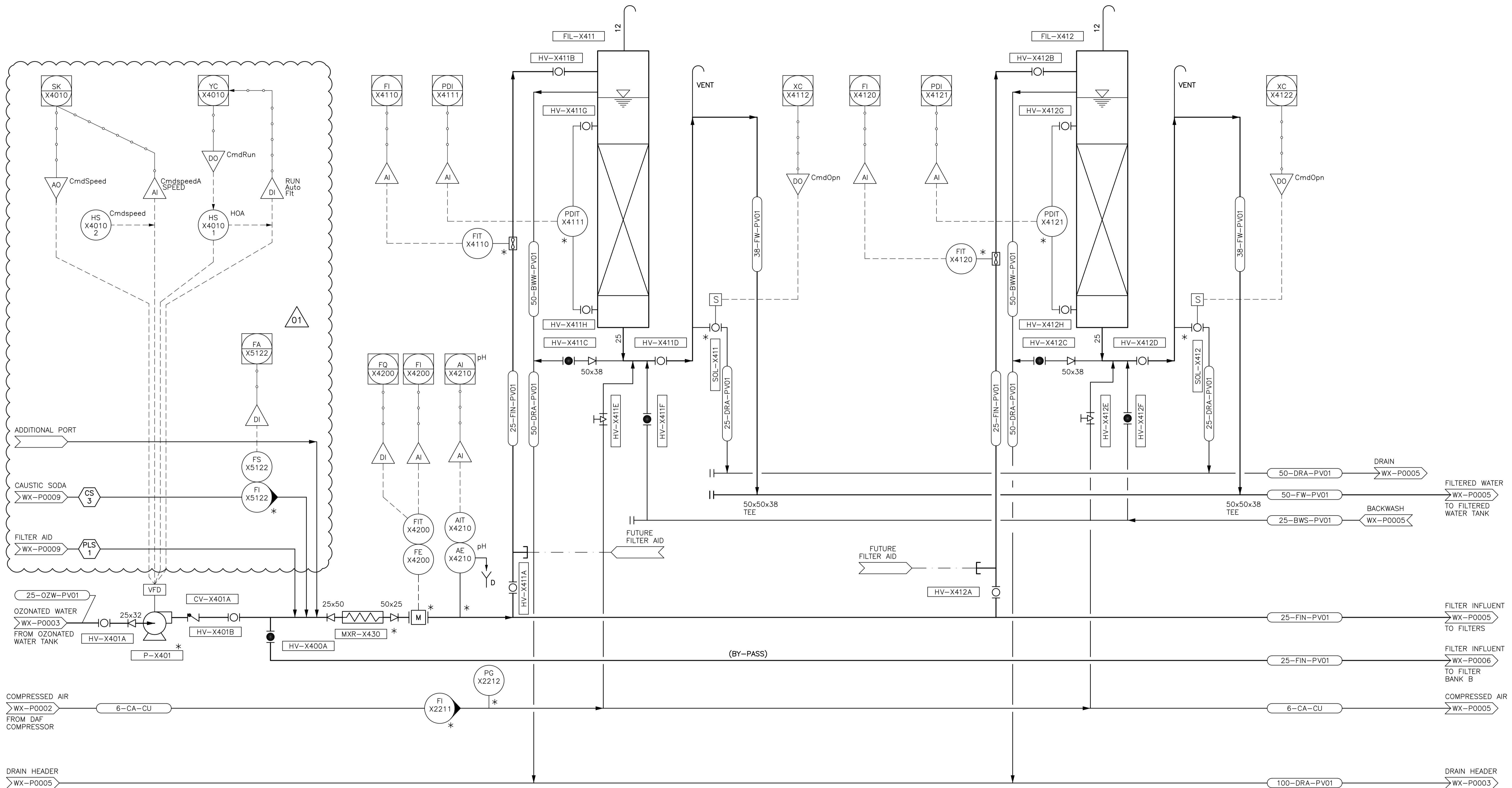
CONTROL: VFD  
CAPACITY: 2.83 m<sup>3</sup>/h  
HEAD: 10.8m

**FIL-X411/ X412**  
**FILTER COLUMNS**

HEIGHT: 6.5m  
DIAMETER: 150mm

**MXR-X430**  
**STATIC MIXER**

SIZE: 50mm  
MATERIAL: PVC



**NOTES:**  
\* CITY OF WINNIPEG TO SUPPLY EQUIPMENT/ INSTRUMENTATION. CONTRACTOR TO INSTALL.



ORIGINAL SIGNED BY  
B.L. MOORE  
JUNE 13/14



B.M. ELEV.	CONSTRUCTION COMPLETION DATE: YYYY MM DD		
DESIGNED BY	KG	CHECKED BY	BW
DRAWN BY	JBC	APPROVED BY	BW
SCALE:	HORIZONTAL NTS	RELEASED FOR CONSTRUCTION	
DATE	2014 06 13	DATE	
NO.	REVISIONS	DATE	BY
1	ISSUED FOR ADDENDUM No. 1	14/06/24	JBC
0	ISSUED FOR TENDER	14/06/13	JBC

**CH2MHILL**

DESIGNED BY: KG  
CHECKED BY: BW  
DRAWN BY: JBC  
APPROVED BY: BW  
SCALE: HORIZONTAL NTS, VERTICAL -  
DATE: 2014 06 13  
PLOT DATE: 2014 06 25

ENGINEER'S SEAL  
ORIGINAL SIGNED BY  
S.B. WILLIAMSON  
14/06/13  
CONSULTANT DRAWING NUMBER  
WX-P0004

**THE CITY OF WINNIPEG**  
WATER AND WASTE DEPARTMENT  
ENGINEERING DIVISION

CITY OF WINNIPEG WATER TREATMENT RESEARCH AND PROCESS OPTIMIZATION FACILITY  
PROCESS  
FILTER BANK A (SHEET 1 OF 2)  
PROCESS AND INSTRUMENTATION DIAGRAM

SHEET X OF X  
CITY DRAWING NUMBER  
1-0601X-P0004-001-01